

STAINLESS STEEL GROOVED END FITTINGS



For pressure rating, listing, and approval information, refer to data sheet or visit SHURJOINT website www.shurjoint.com for details or contact your SHURJOINT representatives.

The Shurjoint cast stainless steel grooved fittings are investment cast in sizes 1" - 12". These fittings are supplied in ASTM A351 or A743 austenitic grades CF8 (304) and CF8M (316). Materials are in compliance with NSF/ANSI 372 for potable water service applications. In addition, fittings are also available on request in CF3M (316L), 316Ti, 2205 Duplex, 2507 Super Duplex and ASTM CK-3MCuN (UNS J93245) the cast equivalent to 254SMO* to meet your specific service requirements. All cast fittings feature full flow characteristics and are designed to the same dimensions of standard ductile iron grooved fittings.

The Shurjoint wrought stainless steel grooved end fittings are fabricated with type 304 stainless steel pipe or are segmentally welded. Dimensions conform to ANSI B16.9 unless specified.

*254SMO is a registered trademark of Avesta Polarit AB.

Fitting pressure ratings are equivalent to the pressure ratings of the coupling used to install them. Coupling pressure ratings are pipe wall thickness dependent.

material specification

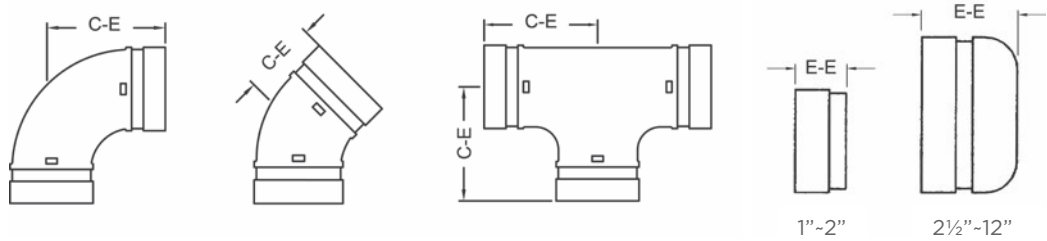
- **Fitting Body:**

Cast fittings: Type 304 stainless steel to ASTM A351 CF8 or A743 Gr. CF8

- Type 316 to ASTM A743 CF8M
- Type 316L to ASTM A743 CF3M
- Type 316Ti to ASTM A240.
- Duplex 2205 to ASTM A890 4A
- Super Duplex 2507 to ASTM A890 5A
- Duplex 254SMO to ASTM A351 CK3McuN

Wrought fittings: Type 304 Type 304 stainless steel to ASTM A351 CF8 or A743 Gr. CF8. Sch. 20S wall thickness.

MODEL SS-10 90° ELBOW
SS-11 45° ELBOW
SS-20 TEE
SS-60 CAP



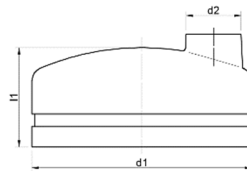
Model SS-10 / SS-11 / SS-20 / SS-60 Stainless Steel Fittings

| Nominal Size | Pipe O.D. | SS-10 90° Elbow | | SS-11 45° Elbow | | SS-20 Tee | | SS-60 Cap | |
|--------------|-----------|-----------------|--------|-----------------|--------|-----------|--------|-----------|--------|
| | | C-E | Weight | C-E | Weight | C-E | Weight | C-E | Weight |
| in | in | in | lbs | in | lbs | in | lbs | in | lbs |
| mm | mm | mm | kg | mm | kg | mm | kg | mm | kg |
| 1 | 1.315 | 2.25 | 0.7 | 1.75 | 0.4 | 2.25 | 0.9 | 0.94 | 0.2 |
| 25 | 33.4 | 57 | 0.3 | 45 | 0.2 | 57 | 0.4 | 24 | 0.1 |
| 1¼ | 1.660 | 2.75 | 0.9 | 1.75 | 0.7 | 2.75 | 1.5 | 0.94 | 0.2 |
| 32 | 42.2 | 70 | 0.4 | 45 | 0.3 | 70 | 0.7 | 24 | 0.1 |
| 1½ | 1.900 | 2.75 | 0.9 | 1.75 | 0.9 | 2.75 | 1.8 | 0.94 | 0.4 |
| 40 | 48.3 | 70 | 0.4 | 45 | 0.4 | 70 | 0.8 | 24 | 0.2 |
| 2 | 2.375 | 3.25 | 1.3 | 2.00 | 1.1 | 3.25 | 2.4 | 0.94 | 0.4 |
| 50 | 60.3 | 83 | 0.6 | 51 | 0.5 | 83 | 1.1 | 24 | 0.2 |
| 2½ | 2.875 | 3.75 | 3.1 | 2.10 | 2.2 | 3.75 | 5.5 | 1.75 | 0.9 |
| 65 | 73.0 | 95 | 1.4 | 54 | 1.0 | 95 | 2.5 | 45 | 0.4 |
| 76.1 | 3.000 | 3.75 | 3.5 | 2.25 | 2.2 | 3.75 | 5.5 | 1.75 | 0.9 |
| | 76.1 | 95 | 1.6 | 57 | 1.0 | 95 | 2.5 | 45 | 0.4 |
| 3 | 3.500 | 4.25 | 2.9 | 2.50 | 2.2 | 4.25 | 4.6 | 2.00 | 1.5 |
| 80 | 88.9 | 108 | 1.3 | 64 | 1.0 | 108 | 2.1 | 51 | 0.7 |
| 4 | 4.500 | 5.00 | 4.8 | 3.00 | 3.5 | 5.00 | 7.5 | 2.00 | 2.0 |
| 100 | 114.3 | 127 | 2.2 | 76 | 1.6 | 127 | 3.4 | 51 | 0.9 |
| 139.7 | 5.500 | 5.50 | 8.6 | 3.25 | 6.2 | 5.50 | 12.3 | 2.38 | 3.5 |
| | 139.7 | 140 | 3.9 | 83 | 2.8 | 140 | 5.6 | 60 | 1.6 |
| 5 | 5.563 | 5.50 | 8.6 | 3.25 | 6.4 | 5.50 | 12.8 | 2.38 | 3.3 |
| 125 | 141.3 | 140 | 3.9 | 83 | 2.9 | 140 | 5.8 | 60 | 1.5 |
| 165.1 | 6.500 | 6.50 | 13.6 | 3.50 | 9.0 | 6.50 | 19.8 | 3.00 | 5.7 |
| | 165.1 | 165 | 6.2 | 89 | 4.1 | 165 | 9.0 | 76 | 2.6 |
| 6 | 6.625 | 6.50 | 14.3 | 3.50 | 9.2 | 6.50 | 21.3 | 3.00 | 5.3 |
| 150 | 168.3 | 165 | 6.5 | 89 | 4.2 | 165 | 9.7 | 76 | 2.4 |

STAINLESS STEEL GROOVED END FITTINGS
 Rev.20230210

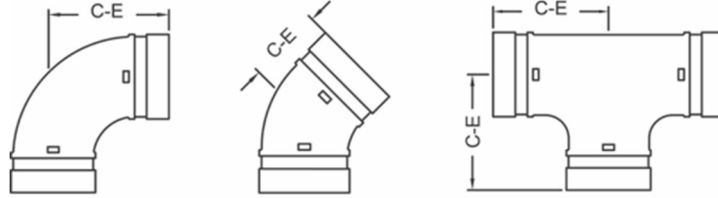
Model SS-10 / SS-11 / SS-20 / SS-60 Stainless Steel Fittings

| Nominal Size | Pipe O.D. | SS-10 90° Elbow | | SS-11 45° Elbow | | SS-20 Tee | | SS-60 Cap | |
|--------------|-----------|-----------------|--------|-----------------|--------|-----------|--------|-----------|--------|
| | | C-E | Weight | C-E | Weight | C-E | Weight | C-E | Weight |
| in | in | in | lbs | in | lbs | in | lbs | in | lbs |
| mm | mm | mm | kg | mm | kg | mm | kg | mm | Kg |
| 8 | 8.625 | 7.75 | 23.5 | 4.25 | 15.6 | 7.75 | 41.4 | 3.50 | 11.4 |
| 200 | 219.1 | 197 | 10.7 | 108 | 7.1 | 197 | 18.8 | 90 | 5.2 |
| 10 | 10.750 | | | 6.26 | 37.0 | | | 5.00 | 22.4 |
| 250 | 273.0 | | | 159 | 16.8 | | | 127 | 10.2 |
| 12 | 12.750 | | | | | | | 6.00 | 32.3 |
| 300 | 323.9 | | | | | | | 154 | 14.7 |
| 200 JIS | 8.516 | 7.75 | 24.6 | 4.25 | 15.6 | 7.75 | 30.4 | 3.50 | 9.2 |
| | 216.3 | 197 | 11.2 | 108 | 7.1 | 197 | 13.8 | 90 | 4.2 |
| 250 JIS | 10.528 | | | 6.26 | 37.0 | | | 5.00 | 19.6 |
| | 267.4 | | | 159 | 16.8 | | | 127 | 8.9 |
| 300 JIS | 12.539 | | | | | | | 6.00 | 29.7 |
| | 318.5 | | | | | | | 154 | 13.5 |



Model SS-60T Transition Cap

| Nominal Size | Pipe O.D. | NPT / BSP | L | Weight |
|--------------|-----------|-----------|------|--------|
| in | in | in | in | lbs |
| mm | mm | mm | mm | kg |
| 2½ | 2.875 | ½ | 1.77 | 0.55 |
| 50 | 73.0 | 15 | 45 | 0.25 |
| 3 | 3.500 | ½ | 2.01 | 0.97 |
| 80 | 88.9 | 15 | 51 | 0.44 |
| 4 | 4.500 | 1 | 2.01 | 1.3 |
| 100 | 114.3 | 25 | 51 | 0.6 |
| 6 | 6.625 | 1 | 2.99 | 2.09 |
| 150 | 168.3 | 25 | 76 | 0.95 |

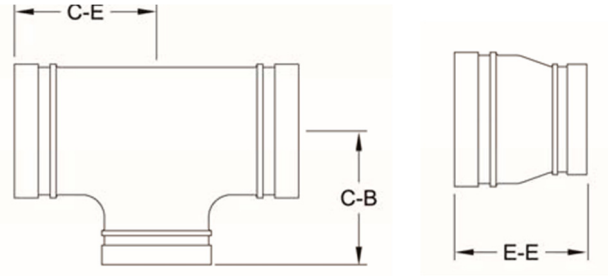


Model WS-10LR / WS-11LR / WS-20 Wrought Stainless Steel Fittings

| Nominal Size | Pipe O.D. | WS-10LR 90° Elbow | | WS-11LR 45° Elbow | | WS-20 Tee | |
|--------------|-----------|-------------------|--------|-------------------|--------|-----------|--------|
| | | C-E | Weight | C-E | Weight | C-E | Weight |
| in | in | in | lbs | in | lbs | in | lbs |
| mm | mm | mm | kg | mm | kg | mm | kg |
| 10 | 10.750 | 15.00 | 51.9 | -- | -- | 8.90* | 42.9 |
| 250 | 273.0 | 381 | 23.6 | -- | -- | 226 | 19.5 |
| 12 | 12.750 | 18.00 | 74.6 | 7.50 | 28.4 | 10.40* | 58.9 |
| 300 | 323.9 | 457 | 33.9 | 190 | 16.9 | 264 | 26.8 |

*Does not conform to ANSI B16.9

**MODEL SS-21 REDUCING TEE
SS-50 CONCENTRIC REDUCER**



Model SS-21 Reducing Tee, SS-50 Concentric Reducer

| Nominal Pipe Size | Pipe O.D. | SS-21 Reducing Tee | | | Weight | SS-50 Concentric Reducer | |
|-------------------|---------------|--------------------|------|-----|--------|--------------------------|--|
| | | C-E | C-B | E-E | | Weight | |
| in | in | in | in | lbs | in | lbs | |
| mm | mm | mm | mm | kg | mm | kg | |
| 1¼ x 1 | 1.660 x 1.315 | 2.76 | 2.76 | 1.2 | 2.50 | 0.5 | |
| 30 x 25 | 42.2 x 33.4 | 70 | 70 | 0.6 | 64 | 0.2 | |
| 1½ x 1 | 1.900 x 1.315 | 2.76 | 2.76 | 1.3 | 2.50 | 0.6 | |
| 40 x 25 | 48.3 x 33.4 | 70 | 70 | 0.6 | 64 | 0.3 | |
| 1½ x 1¼ | 1.900 x 1.660 | 2.76 | 2.76 | 1.3 | 2.50 | 0.7 | |
| 40 x 32 | 48.3 x 42.2 | 70 | 70 | 0.6 | 64 | 0.3 | |
| 2 x 1 | 2.375 x 1.315 | 2.76 | 2.76 | 1.5 | 2.50 | 0.8 | |
| 50 x 25 | 60.3 x 33.4 | 70 | 70 | 0.7 | 64 | 0.3 | |
| 2 x 1¼ | 2.375 x 1.660 | 2.76 | 2.76 | 1.8 | 2.50 | 0.7 | |
| 50 x 32 | 60.3 x 42.2 | 70 | 70 | 0.8 | 64 | 0.7 | |
| 2 x 1½ | 2.375 x 1.900 | 2.76 | 2.76 | 1.8 | 2.50 | 0.7 | |
| 50 x 40 | 60.3 x 48.3 | 70 | 70 | 0.8 | 64 | 0.3 | |
| 2½ x 1 | 2.875 x 1.315 | 3.74 | 3.74 | 2.0 | 2.50 | 0.9 | |
| 65 x 25 | 73.0 x 33.4 | 95 | 95 | 0.9 | 64 | 0.4 | |
| 2½ x 1¼ | 2.875 x 1.660 | 3.74 | 3.74 | 2.0 | 2.50 | 1.1 | |
| 65 x 32 | 73.0 x 42.2 | 95 | 95 | 0.9 | 64 | 0.5 | |
| 2½ x 1½ | 2.875 x 1.900 | 3.74 | 3.74 | 2.0 | 2.50 | 1.2 | |
| 65 x 40 | 73.0 x 48.3 | 95 | 95 | 0.9 | 64 | 0.5 | |
| 2½ x 2 | 2.875 x 2.375 | 3.00 | 3.00 | 4.1 | 2.50 | 1.1 | |
| 65 x 50 | 73.0 x 60.3 | 76 | 76 | 1.9 | 64 | 0.5 | |
| 76.1 mm x 25 | 3.000 x 1.315 | 3.74 | 3.74 | 2.0 | 2.50 | 0.9 | |
| | 76.1 x 33.4 | 95 | 95 | 0.9 | 64 | 0.4 | |
| 76.1 mm x 32 | 3.000 x 1.660 | 3.74 | 3.74 | 2.0 | 2.50 | 1.1 | |
| | 76.1 x 42.2 | 95 | 95 | 0.9 | 64 | 0.5 | |
| 76.1 mm x 40 | 3.000 x 1.900 | 3.74 | 3.74 | 2.0 | 2.50 | 1.2 | |
| | 76.1 x 48.3 | 95 | 95 | 0.9 | 64 | 0.5 | |

STAINLESS STEEL GROOVED END FITTINGS
Rev.20230210

| Model SS-21 Reducing Tee, SS-50 Concentric Reducer | | | | | | |
|--|---------------|--------------------|------|--------|--------------------------|--------|
| Nominal Size | Pipe O.D. | SS-21 Reducing Tee | | Weight | SS-50 Concentric Reducer | |
| | | C-E | C-B | | E-E | Weight |
| in | in | in | in | lbs | in | lbs |
| mm | mm | mm | mm | kg | mm | kg |
| 76.1 mm x 50 | 3.000 x 2.375 | 3.00 | 3.00 | 3.3 | 2.50 | 1.1 |
| | 76.1 x 60.3 | 76 | 76 | 1.5 | 64 | 0.5 |
| 3 x 1¼ | 3.500 x 1.660 | 4.25 | 4.25 | 3.5 | 2.50 | 1.1 |
| 80 x 32 | 88.9 x 42.2 | 108 | 108 | 1.6 | 64 | 0.5 |
| 3 x 1½ | 3.500 x 1.900 | 4.25 | 4.25 | 2.9 | 2.50 | 1.5 |
| 80 x 40 | 88.9 x 48.3 | 108 | 108 | 1.3 | 64 | 0.6 |
| 3 x 2 | 3.500 x 2.375 | 4.25 | 4.25 | 4.6 | 2.50 | 1.3 |
| 80 x 50 | 88.9 x 60.3 | 108 | 108 | 2.1 | 64 | 0.6 |
| 3 x 2½ | 3.500 x 2.875 | 3.74 | 3.27 | 6.0 | 3.50 | 2.2 |
| 80 x 65 | 88.9 x 73.0 | 95 | 83 | 2.7 | 89 | 1.0 |
| 80 x 76.1 mm | 3.500 x 3.000 | 3.74 | 3.27 | 4.6 | 3.50 | 2.2 |
| | 88.9 x 76.1 | 95 | 83 | 2.1 | 89 | 1.0 |
| 4 x 2 | 4.500 x 2.375 | 5.00 | 5.00 | 7.3 | 3.00 | 2.2 |
| 100 x 50 | 114.3 x 60.3 | 127 | 127 | 3.3 | 76 | 1.0 |
| 4 x 2½ | 4.500 x 2.875 | 4.49 | 3.86 | 8.8 | 4.00 | 3.1 |
| 100 x 65 | 114.3 x 73.0 | 114 | 98 | 4.0 | 102 | 1.4 |
| 100 x 76.1 mm | 4.500 x 3.000 | 4.49 | 3.86 | 9.0 | 4.00 | 3.1 |
| | 114.3 x 76.1 | 114 | 98 | 4.1 | 102 | 1.4 |
| 4 x 3 | 4.500 x 3.500 | 4.49 | 3.86 | 7.0 | 3.00 | 2.0 |
| 100 x 80 | 114.3 x 88.9 | 114 | 98 | 3.2 | 76 | 0.9 |
| 139.7 x 76.1 | 5.563 x 3.000 | 5.50 | 5.50 | 11.2 | 3.50 | 3.5 |
| 125 x 65 | 139.7 x 76.1 | 140 | 140 | 5.1 | 89 | 1.6 |
| 139.7 x 80 | 5.563 x 3.500 | 5.50 | 5.50 | 11.2 | 3.50 | 3.5 |
| 125 x 80 | 139.7 x 88.9 | 140 | 140 | 5.1 | 89 | 1.6 |
| 139.7 x 100 | 5.500 x 4.500 | 5.50 | 5.50 | 11.2 | 3.50 | 3.5 |
| 125 x 100 | 139.7 x 114.3 | 140 | 140 | 5.1 | 89 | 1.6 |
| 5 x 2½ | 5.563 x 2.875 | 5.50 | 5.50 | 11.2 | 3.50 | 3.5 |
| 125 x 65 | 141.3 x 73.0 | 140 | 140 | 5.1 | 89 | 1.6 |
| 5 x 3 | 5.563 x 3.500 | 5.50 | 5.50 | 11.2 | 3.50 | 3.5 |
| 125 x 80 | 141.3 x 88.9 | 140 | 140 | 5.1 | 89 | 1.6 |
| 5 x 4 | 5.563 x 4.500 | 5.50 | 5.50 | 11.2 | 3.50 | 3.5 |
| 125 x 100 | 141.3 x 114.3 | 140 | 140 | 5.1 | 89 | 1.6 |
| 165.1 x 80 | 6.500 x 3.500 | 5.91 | 5.91 | 15.6 | 4.00 | 5.1 |
| | 165.1 x 88.9 | 150 | 150 | 7.1 | 102 | 2.3 |
| 165.1 x 100 | 6.500 x 4.500 | 6.50 | 6.50 | 19.4 | 4.00 | 5.1 |
| | 165.1 x 114.3 | 165 | 165 | 8.8 | 102 | 2.3 |

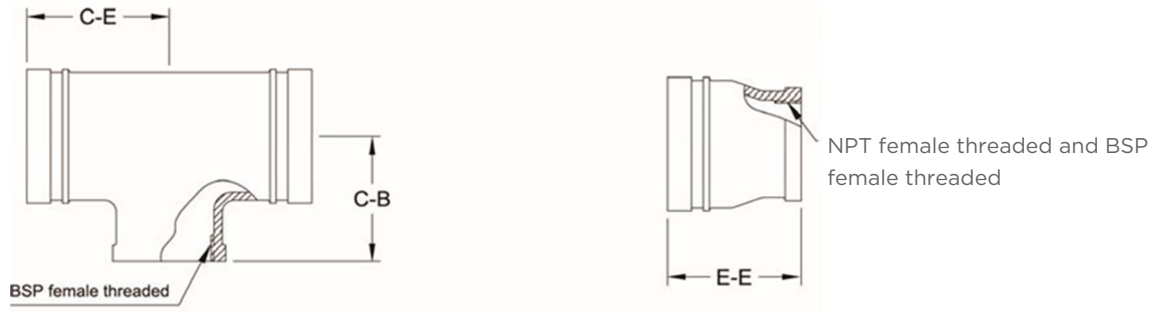
STAINLESS STEEL GROOVED END FITTINGS
Rev.20230210

| Model SS-21 Reducing Tee, SS-50 Concentric Reducer | | | | | | |
|--|-----------------|--------------------|-------|--------|--------------------------|--------|
| Nominal Size | Pipe O.D. | SS-21 Reducing Tee | | Weight | SS-50 Concentric Reducer | |
| | | C-E | C-B | | E-E | Weight |
| in | in | in | in | lbs | in | lbs |
| mm | mm | mm | mm | kg | mm | kg |
| 165.1 x 139.7 | 6.500 x 5.500 | 6.50 | 6.50 | 19.4 | 4.00 | 5.7 |
| | 165.1 x 139.7 | 165 | 165 | 8.8 | 102 | 2.6 |
| 6 x 3 | 6.625 x 3.500 | 5.91 | 5.91 | 15.6 | 4.00 | 5.1 |
| 150 x 80 | 168.3 x 88.9 | 150 | 150 | 7.1 | 102 | 2.3 |
| 6 x 4 | 6.625 x 4.500 | 6.50 | 6.50 | 19.4 | 4.00 | 5.1 |
| 150 x 100 | 168.3 x 114.3 | 165 | 165 | 8.8 | 102 | 2.3 |
| 6 x 5 | 6.625 x 5.563 | 6.50 | 6.50 | 19.4 | 4.00 | 5.7 |
| 150 x 125 | 168.3 x 141.3 | 165 | 165 | 8.8 | 102 | 2.6 |
| 8 x 4 | 8.625 x 4.500 | 7.76 | 7.76 | 35.4 | 5.00 | 9.5 |
| 200 x 100 | 219.1 x 114.3 | 197 | 197 | 16.1 | 127 | 4.3 |
| 8 x 5 | 8.625 x 5.563 | 7.76 | 7.76 | 28.6 | 5.00 | 11.9 |
| 200 x 125 | 219.1x 141.3 | 197 | 197 | 13.0 | 127 | 5.4 |
| 8 x 6 | 8.625 x 6.625 | 7.76 | 7.76 | 54.1 | 5.00 | 9.5 |
| 200 x 150 | 219.1 x 168.3 | 197 | 197 | 24.6 | 127 | 4.3 |
| 10 x 6 | 10.750 x 6.625 | 9.02 | 9.02 | 59.2 | 6.00 | 18.3 |
| 250 x 150 | 273.0 x 168.3 | 229 | 229 | 26.9 | 152 | 8.3 |
| 10 x 8 | 10.750 x 8.625 | 9.02 | 9.02 | 60.1 | 6.00 | 19.1 |
| 250 x 200 | 273.0 x 219.1 | 229 | 229 | 27.3 | 152 | 8.7 |
| 12 x 4* | 12.750 x 4.500 | 10.00 | 8.50 | 51.9 | -- | -- |
| 300 x 100 | 323.9 x 114.3 | 254 | 216 | 23.6 | -- | -- |
| 12 x 6* | 12.750 x 6.625 | 10.00 | 8.62 | 52.4 | -- | -- |
| 300 x 150 | 323.9 x 168.3 | 254 | 219 | 23.8 | -- | -- |
| 12 x 8 | 12.750 x 8.625 | -- | -- | -- | 7.00 | 49.5 |
| 300 x 200 | 323.9 x 219.1 | -- | -- | -- | 178 | 22.0 |
| 12 x 10 | 12.750 x 10.750 | 10.00* | 9.50 | 55.0 | 7.00 | 23.1 |
| 300 x 250 | 323.9 x 273.0 | 254 | 241.3 | 25 | 178 | 11.3 |
| 200 JIS x 100 | 8.516 x 4.500 | 7.76 | 7.76 | 35.4 | 5.00 | 9.5 |
| | 216.3 x 114.3 | 197 | 197 | 16.1 | 127 | 4.3 |
| 200 JIS x 125 | 8.516 x 5.500 | 7.76 | 7.76 | 28.6 | 5.00 | 11.9 |
| | 216.3 x 139.7 | 197 | 197 | 13.0 | 127 | 5.4 |
| 200 JIS x 165.1 | 8.516 x 6.500 | 7.76 | 7.76 | 54.1 | 5.00 | 9.5 |
| | 216.3 x 165.1 | 197 | 197 | 24.6 | 127 | 4.3 |
| 250 JIS x 100* | 10.550 x 4.500 | 8.50 | 7.25 | 38.3 | -- | -- |
| | 267.4 x 114.3 | 215.9 | 184.1 | 17.4 | -- | -- |

| Model SS-21 Reducing Tee, SS-50 Concentric Reducer | | | | | | |
|--|-----------------|--------------------|------|--------|--------------------------|--------|
| Nominal Size | Pipe O.D. | SS-21 Reducing Tee | | Weight | SS-50 Concentric Reducer | |
| | | C-E | C-B | | E-E | Weight |
| in | in | in | in | lbs | in | lbs |
| mm | mm | mm | mm | kg | mm | kg |
| 250 JIS x 165.1 | 10.528 x 6.500 | 9.02 | 9.02 | 59.2 | 6.00 | 18.3 |
| | 267.4 x 165.1 | 229 | 229 | 26.9 | 152 | 8.3 |
| 250 JIS x 200 JIS | 10.528 x 8.516 | 9.02 | 9.02 | 60.1 | 6.00 | 19.1 |
| | 267.4 x 216.3 | 229 | 229 | 27.3 | 152 | 8.7 |
| 300 JIS x 100* | 12.550 x 4.500 | 10.00 | 8.50 | 51.9 | -- | -- |
| | 318.5 x 114.3 | 254 | 216 | 23.6 | -- | -- |
| 300 JIS x 200 JIS | 12.539 x 8.516 | -- | -- | -- | 7.00 | 49.5 |
| | 318.5 x 216.3 | -- | -- | -- | 178 | 22.0 |
| 300 JIS x 250 JIS | 12.539 x 10.528 | -- | -- | -- | 7.00 | 23.1 |
| | 318.5 x 267.4 | -- | -- | -- | 178 | 11.3 |

* Wrought items sold as "WS" series item.

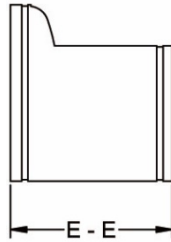
MODEL SS-21F REDUCING TEE (GR x GR x FT)
SS-50F CONCENTRIC REDUCER (GR x FT)



Model SS-21F Reducing Tee, SS-50F Concentric Reducer

| Nominal Pipe Size | Pipe O.D. | SS-21F Reducing Tee | | Weight | SS-50F Concentric Reducer | |
|-------------------|------------------|---------------------|-----|--------|---------------------------|--------|
| | | C-E | C-B | | E-E | Weight |
| mm | mm | mm | mm | kg | mm | kg |
| 65 x 40F | 73.0/76.1 x 48.3 | 76 | 76 | 0.83 | --- | --- |
| 65 x 50F | 73.0/76.1 x 60.3 | --- | --- | --- | 89 | 0.95 |
| 80 x 50F | 88.9 x 60.3 | 95 | 83 | 2.1 | 89 | 0.92 |
| 100 x 50F | 114.3 x 60.3 | 114 | 98 | 3.2 | 102 | 1.76 |

*FT: NPT female threaded and BSP female threaded

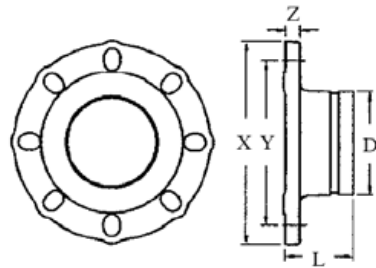


Model SS-51 Wrought Eccentric Reducer

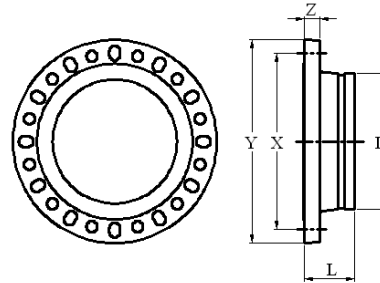
| Nominal Pipe Size | | Pipe O.D. | E-E | Weight |
|-------------------|----|----------------|------|--------|
| in | mm | in | in | in |
| mm | mm | mm | mm | mm |
| 2½ x 2* | | 2.875 x 2.375 | 3.50 | 1.23 |
| 65 x 50 | | 73.0 x 60.3 | 89 | 0.56 |
| 3 x 2* | | 3.500 x 2.375 | 3.50 | 2.49 |
| 80 x 50 | | 88.9 x 60.3 | 89 | 1.13 |
| 3 x 2½* | | 3.500 x 2.875 | 3.50 | 1.96 |
| 80 x 65 | | 88.9 x 73.0 | 89 | 0.89 |
| 4 x 2½* | | 4.500 x 2.875 | 4.00 | 2.64 |
| 100 x 65 | | 114.3 x 73.0 | 102 | 1.20 |
| 4 x 3* | | 4.500 x 3.500 | 4.00 | 2.86 |
| 100 x 80 | | 114.3 x 88.9 | 102 | 1.30 |
| 5 x 4* | | 5.563 x 4.500 | 5.00 | 3.45 |
| 125 x 100 | | 141.3 x 114.3 | 127 | 1.57 |
| 6 x 4* | | 6.625 x 4.500 | 5.50 | 6.95 |
| 150 x 100 | | 168.3 x 114.3 | 140 | 3.16 |
| 8 x 4* | | 8.625 x 4.500 | 6.00 | 12.89 |
| 200 x 100 | | 219.1 x 114.3 | 152 | 5.86 |
| 8 x 6* | | 8.625 x 6.625 | 6.00 | 11.70 |
| 200 x 150 | | 219.1 x 168.3 | 152 | 5.32 |
| 10 x 8* | | 10.750 x 8.625 | 7.00 | 22.80 |
| 250 x 200 | | 273.0 x 219.1 | 178 | 10.40 |
| 12 x 6* | | 12.750 x 6.625 | 8.00 | 21.10 |
| 300 x 150 | | 323.9 x 168.3 | 203 | 9.60 |
| 12 x 8* | | 12.750 x 8.625 | 8.00 | 20.90 |
| 300 x 200 | | 323.9 x 219.1 | 203 | 9.50 |

* Fabricated from Sch. 20S pipes.

STAINLESS STEEL GROOVED END FITTINGS
Rev.20230210



Size: 2" - 8"



Size: 10" - 12"

Model SS-80 Stainless Steel Universal Flange Adapter

| Nominal Pipe Size | Pipe O.D. | L | X | Y: Flange Drilling | | | | Z | Bolts | | | | Weight |
|-------------------|-----------|------|-------|--------------------|-------|-------|---------|------|----------------|-------|-------|---------|--------|
| | | | | ANSI 125 / 150 | PN 10 | PN 16 | JIS 10K | | ANSI 125 / 150 | PN 10 | PN 16 | JIS 10K | |
| in | in | in | in | in | in | in | in | in | in | in | in | in | lbs |
| mm | mm | mm | mm | mm | mm | mm | mm | mm | mm | mm | mm | mm | kg |
| 2 | 2.375 | 2.50 | 6.50 | 4.75 | 4.92 | 4.92 | 4.72 | 0.63 | 5/8 | M16 | M16 | M16 | 4.4 |
| 50 | 60.3 | 64 | 165 | 121 | 125 | 125 | 120 | 16 | 4 | 4 | 4 | 4 | 2.0 |
| 2½ | 2.875 | 3.00 | 7.28 | 5.50 | 5.70 | 5.70 | 5.50 | 0.63 | 5/8 | --- | --- | --- | 6.4 |
| 65 | 73.0 | 76 | 185 | 140 | 145 | 145 | 140 | 16 | 4 | --- | --- | --- | 2.9 |
| 76.1 | 3.000 | 3.00 | 7.28 | 5.50 | 5.70 | 5.70 | 5.50 | 0.63 | --- | M16 | M16 | M16 | 6.6 |
| | 76.1 | 76 | 185 | 140 | 145 | 145 | 140 | 16 | --- | 4 | 4 | 4 | 3.0 |
| 3 | 3.500 | 2.95 | 7.78 | 6.00 | 6.30 | 6.30 | 5.90 | 0.63 | 5/8 | M16 | M16 | M16 | 7.5 |
| 80 | 88.9 | 75 | 200 | 152 | 160 | 160 | 150 | 16 | 8 | 8 | 8 | 8 | 3.4 |
| 4 | 4.500 | 2.95 | 8.86 | 7.50 | 7.09 | 7.09 | 6.89 | 0.63 | 5/8 | M16 | M16 | M16 | 8.6 |
| 100 | 114.3 | 75 | 225 | 191 | 180 | 180 | 175 | 16 | 8 | 8 | 8 | 8 | 3.9 |
| 139.7 | 5.500 | 2.95 | 10.00 | 8.50 | 8.27 | 8.27 | 8.27 | 0.63 | --- | M16 | M16 | M20 | 14.7 |
| | 139.7 | 75 | 254 | 216 | 210 | 210 | 210 | 16 | --- | 8 | 8 | 8 | 6.7 |
| 5 | 5.563 | 2.95 | 10.00 | 8.50 | 8.27 | 8.27 | 8.27 | 0.87 | ¾ | --- | --- | --- | 14.7 |
| 125 | 141.3 | 75 | 254 | 216 | 210 | 210 | 210 | 22 | 8 | --- | --- | --- | 6.7 |
| 165.1 | 6.500 | 2.95 | 10.71 | 9.50 | 9.45 | 9.45 | 9.45 | 0.63 | --- | M20 | M20 | M20 | 15.0 |
| | 165.1 | 75 | 272 | 241 | 240 | 240 | 240 | 16 | --- | 8 | 8 | 8 | 6.8 |
| 6 | 6.625 | 2.95 | 10.71 | 9.50 | 9.45 | 9.45 | 9.45 | 0.63 | ¾ | --- | --- | --- | 15.2 |
| 150 | 168.3 | 75 | 272 | 241 | 240 | 240 | 240 | 16 | 8 | --- | --- | --- | 6.9 |
| 8 | 8.625 | 4.00 | 13.50 | 11.75 | 11.61 | 11.61 | --- | 0.87 | ¾ | M20 | M20 | --- | 31.9 |
| 200 | 219.1 | 102 | 343 | 298 | 295 | 295 | --- | 22 | 8 | 8 | 16 | --- | 14.5 |
| 200 JIS | 8.516 | 4.00 | 13.50 | 11.75 | 11.61 | 11.61 | 11.42 | 0.87 | --- | --- | --- | M20 | 30.8 |
| | 216.3 | 102 | 343 | 298 | 295 | 295 | 290 | 22 | --- | --- | --- | 12 | 14.0 |
| 10 | 10.750 | 3.94 | 16.00 | 14.25 | 13.77 | 14.00 | 14.00 | 1.18 | 7/8 | M20 | M24 | M22 | 49.6 |
| 250 | 273.0 | 100 | 406 | 362 | 350 | 355 | 355 | 30 | 12 | 12 | 12 | 12 | 22.5 |
| 12 | 12.750 | 4.45 | 19.00 | 17.00 | 15.75 | 16.14 | --- | 1.26 | 7/8 | M20 | M24 | --- | 65.9 |
| 300 | 323.9 | 113 | 483 | 432 | 400 | 410 | --- | 32 | 12 | 12 | 12 | --- | 29.9 |

Contact Shurjoint for other sizes.

General note

- *Pressure Ratings* for fittings conform to the working pressure of the coupling used to join the system.
- Listed and or Approved Pressures are pressure ratings for fire protection systems, tested and approved by various approval bodies. Please always refer to the latest approval data posted on the Shurjoint website.
- Field Joint Test: For one time only, the system may be tested hydrostatically at 1½ times the maximum working pressure listed (AWWA C606 5.2.3).
- Warning: Piping systems must always be depressurized and drained before attempting disassembly and or removal of any components.
- The 10 Year Limited Warranty applies to manufacturing defects only and does not cover severe service/temperature applications or wear parts.
- Shurjoint reserves the right to change specifications, designs and or standard without notice and without incurring any obligations.

Aalberts integrated piping systems APAC Inc.

11F-2 No. 175 Zhongzheng 2nd Rd. / Lingya, Kaohsiung
Taiwan

www.aalberts.com/ips